

Figure 114. Transfer Case Assembly (Sheet 1 of 3)

Current part is item (2) on diagram. Available at www.oshkoshequipment.com

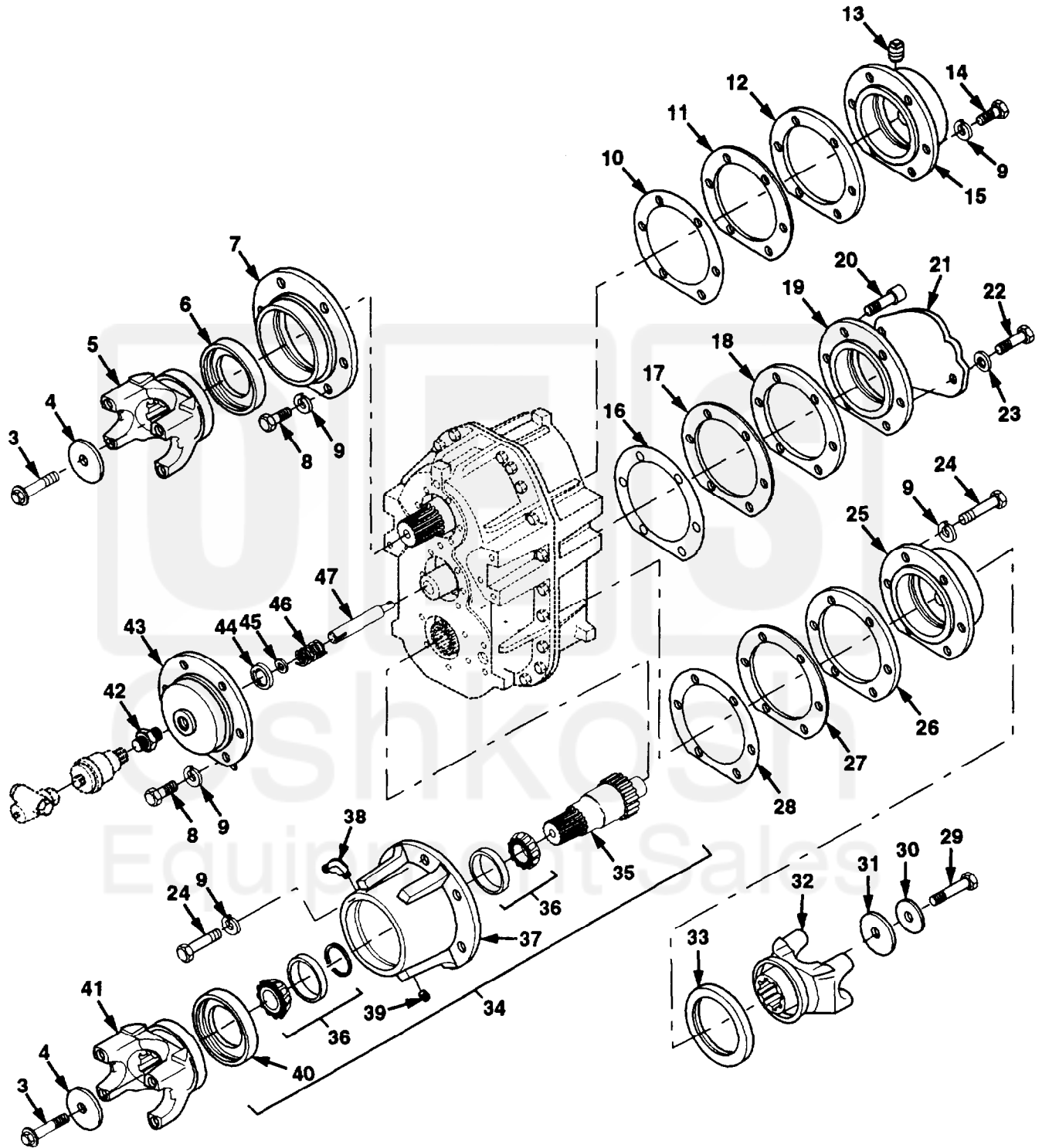


Figure 114. Transfer Case Assembly (Sheet 2 of 3)

Current part is item (2) on diagram. Available at www.oshkoshequipment.com

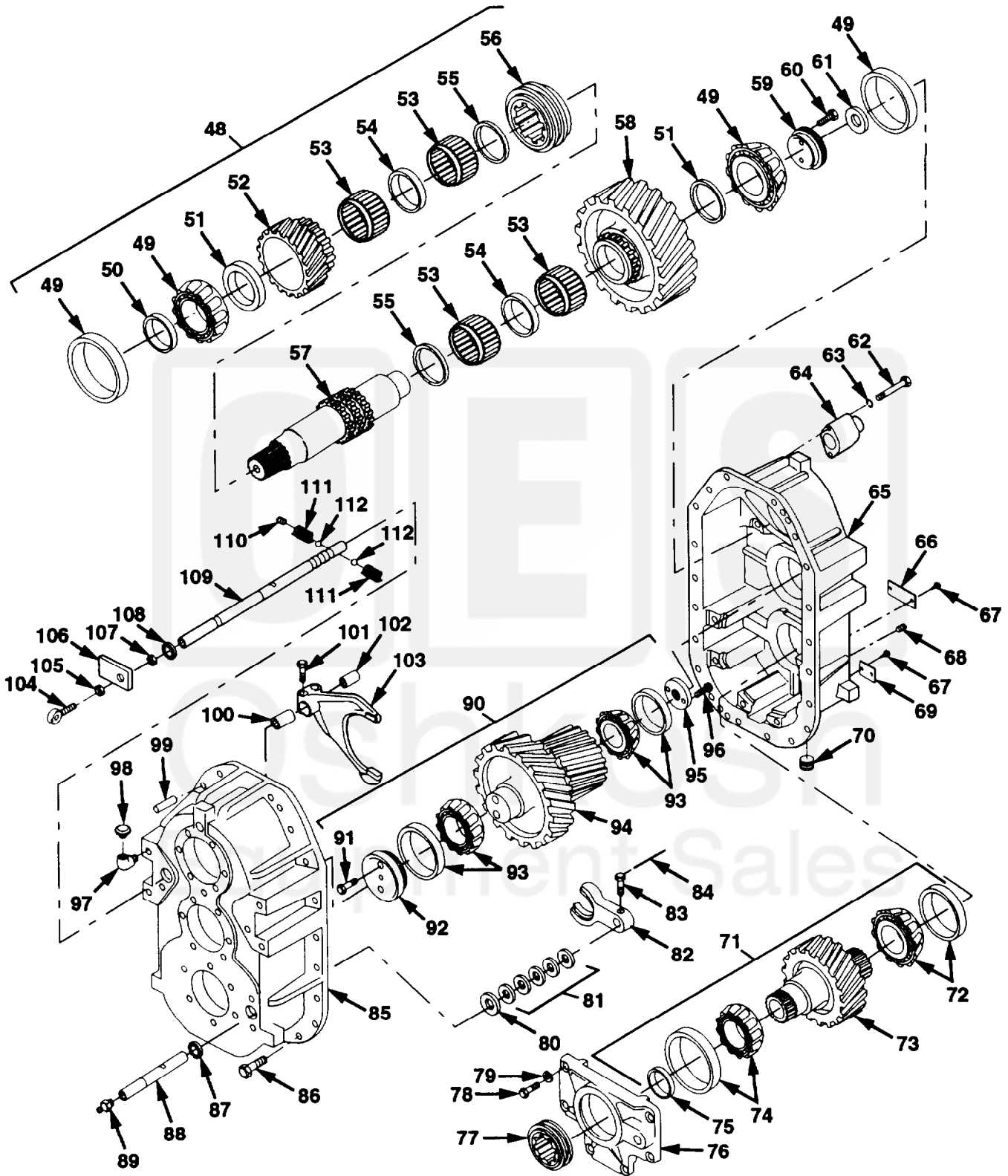


Figure 114. Transfer Case Assembly (Sheet 3 of 3)

Current part is item (2) on diagram. Available at www.oshkoshequipment.com

Section II. REPAIR PARTS LIST

(1) ILLUSTRATION		(2)	(3)	(4)	(5)	(6)	(7)	(8)
(a) FIG NO.	(b) ITEM NO.	SMR CODE	NATIONAL STOCK NUMBER	CAGE	PART NUMBER	DESCRIPTION USABLE ON CODE	UM	QTY INC IN UNIT
						GROUP 0801 TRANSFER CASE ASSEMBLY		
114	1	PAFHH	2520-01-338-2570	19207	57K3049	XFER CASE, DRESSED W/ CONTAINER	EA	1
114	2	PAFHH	2520-01-353-2536	19207	12436585	TRANSFER CS, DRESSED	EA	1
114	3	PAFZZ	5305-01-149-1935	45152	111454A	.SCREW, CAP, FLANGED 3/4-10 X 2 1/4	EA	2
114	4	PAFZZ	5310-01-339-0243	45152	1704630	.RETAINER, WASHER	EA	2
114	5	PAFZZ	2520-01-341-2460	72447	6.5-4-2561-1	.YOKE, INPUT, TRF CS	EA	1
114	6	PAFZZ	5330-01-033-2697	08162	415304	.SEAL, PLAIN ENCASED	EA	1
114	7	PBHZZ	3040-01-145-0531	45152	55019CX	.PLATE, RETAINING, 020	EA	1
114	8	PAHZZ	5305-00-732-0511	80204	61821BH050C113N	.SCREW, CAP, HEX 1/2-13 X 1 1/8	EA	12
114	9	PAHZZ	5310-00-584-5272	96906	MS35338-48	.WASHER, LOCK 1/2	EA	30
114	10	PAHZZ	5365-01-081-5323	45152	55084BX	.SPACER, PLATE	EA	3
114	11	PAHZZ	5365-01-081-9748	45152	55086BX	.SHIM .005	EA	3
114	12	PAHZZ	5365-01-081-9747	45152	55085BX	.SHIM .005	EA	3
114	13	PAHZZ	4730-00-221-2137	96906	MS20913-2S	.PLUG	EA	1
114	14	PAHZZ	5305-00-071-2070	80204	B1821BH050C175N	.SCREW, CAP, HEX 1/2-13 X 1 3/4	EA	6
114	15	PBHZZ	3110-01-340-0326	45152	1370220	.PLATE, RETAINING	EA	1
114	16	PAHZZ	5365-01-339-0961	45152	1709080	.SHIM .0075	EA	3
114	17	PAHZZ	5365-01-338-8222	45152	1709060	.SHIM .020	EA	3
114	18	PAHZZ	5365-01-339-0962	45152	1709070	.SHIM .005	EA	3
114	19	PAHZZ	3110-01-344-3954	45152	1882470	.PLATE, RETAINING	EA	1
114	20	PAHZZ	5305-00-159-1432	80205	NAS1352-8-24P	.SCREW, CAP, SKT HD 1/2-13 X 1 1/2	EA	6
114	21	PAHZZ	5340-01-377-2793	45152	2018990	.PLATE, COVER 3/4	EA	1
114	22	PAFZZ	- - -	45152	1810HX1	.SCREW, CAP, HEX 1/2-13 X 3/4	EA	2
114	23	PAFZZ	5310-00-809-5997	96906	MS27183-17	.WASHER, FLAT 1/2	EA	2
114	24	PAHZZ	5305-00-071-2069	80204	B1821BH050C150N	.SCREW, CAP, HEX 1/2-13 X 1 1/2	EA	12
114	25	PFHZZ	5340-01-340-0291	45152	1839020	.COVER, ACCESS	EA	1
114	26	PAHZZ	5365-01-339-4027	45152	1843660	.SHIM .001	EA	3
114	27	PAHZZ	5365-01-341-8961	45152	1843580	.SHIM .0075	EA	3
114	28	PAHZZ	5365-01-339-0965	45152	1843590	.SPACER, PLATE .020	EA	3
114	29	PAFZZ	5305-01-338-7301	45152	60026AX	.SCREW, CAP 3/4-10 X 2	EA	1
114	30	PAFZZ	5310-00-809-8533	96906	MS27183-23	.WASHER, FLAT 3/4	EA	1
114	31	PAFZZ	5310-01-338-8184	45152	1888370	.WASHER	EA	1
114	32	PBFZZ	- - -	72447	6.5-4-4401-1X	.YOKE, REAR OUTPUT	EA	1
114	33	PAFZZ	5330-00-725-1511	10988	G13824	.SEAL, PINION	EA	1

Current part is item (2) on diagram. Available at www.oshkoshequipment.com

Section II. REPAIR PARTS LIST

(1) ILLUSTRATION		(2)	(3)	(4)	(5)	(6)	(7)	(8)
(a) FIG NO.	(b) ITEM NO.	SMR CODE	NATIONAL STOCK NUMBER	CAGE	PART NUMBER	DESCRIPTION USABLE ON CODE	UM	QTY INC IN UNIT
						GROUP 0801 TRANSFER CASE ASSEMBLY		
114	34	PBHHH	3040-01-338-4576	45152	1843610U	..SHAFT ASSY, FRONT	EA	1
114	35	PBHZZ	3040-01-338-4434	45152	1843710	..SHAFT, FRONT	EA	1
114	36	PAHZZ	3110-01-338-6931	60038	39590 ASSY 902A3	..CONE AND ROLLERS	EA	1
114	37	PFHZZ	3110-01-346-9776	45152	1691980	..BEARING, CAP	EA	1
114	38	PAHZZ	4730-01-082-4662	01276	2023-4-8S	..ELBOW, PIPE TO TUBE	EA	1
114	39	PAHZZ	4730-00-221-2137	96906	MS20913-2S	..PLUG 1/4 GAL	EA	1
114	40	PAFZZ	5330-01-340-9882	01212	415023-SSR	..SEAL, OIL	EA	1
114	41	PAFZZ	2520-01-339-0535	72447	5-4-8351-1X	..YOKE, TRANSFER CASE	EA	1
114	42	PAHZZ	4730-00-202-9539	19207	7331521	..REDUCER, TUBE	EA	1
114	43	PAHZZ	3110-01-344-3955	45152	1725520	..BEARING, CAP	EA	1
114	44	PAHZZ	3120-00-596-7688	45152	39745AX	..THRUST, BEARING	EA	1
114	45	PAHZZ	3120-01-146-9782	45152	40393AX	..BEARING, WASHER	EA	1
114	46	PAHZZ	5360-01-145-4724	45152	53733AX	..SPRING, HELICAL, COMP	EA	1
114	47	PBHZZ	3040-01-144-8220	57733	105591	..SHAFT, SHOULDERED	EA	1
114	48	PBHHH	3040-01-338-7601	45152	1843600U	..SHAFT ASSY, UPPER	EA	1
114	49	PBHZZ	3110-00-100-0661	45152	462TA45	..BEARING ASSEMBLY	EA	2
114	50	PBHZZ	5365-01-143-7436	45152	1317890	..SPACER, RING	EA	1
114	51	PBHZZ	5365-01-330-2223	45152	55026BX	..SPACER	EA	2
114	52	PBHZZ	3020-01-339-0497	45152	1832480	..GEAR, HELICAL 28T	EA	1
114	53	PAHZZ	3110-00-842-5207	60380	WJ485424	..ROLLER, CAGED	EA	4
114	54	PBHZZ	5365-01-338-7416	45152	1839360	..SPACER	EA	2
114	55	PBHZZ	5365-01-332-2150	45152	55027BX	..SPACER	EA	2
114	56	PBHZZ	3020-01-144-8236	95019	70465-9	..COLLAR, CLUTCH	EA	1
114	57	PBHZZ	3040-01-338-4433	45152	1704350	..SHAFT, UPPER	EA	1
114	58	PBHZZ	3020-01-339-0498	45152	1832500	..GEAR, HELICAL 48T	EA	1
114	59	PBHZZ	5330-01-340-8368	45152	1274198	..RETAINER, PACKING	EA	1
114	60	PAHZZ	5305-00-071-2069	80204	B1821BH050C150N	..SCREW, CAP, HEX 1/2-13 X 1 1/2	EA	2
114	61	PAHZZ	3040-01-341-2340	71724	T-560-0330-001	..RING, PISTON	EA	1
114	62	PAFZZ	5305-00-225-8507	96906	MS90725-43	..SCREW, CAP, HEX 5/16-18 X 2 3/4	EA	2
114	63	PAFZZ	5310-00-407-9566	96906	MS35338-45	..WASHER, LOCK 5/16	EA	2
114	64	PFHZZ	5340-01-144-8237	45152	1321590	..COVER, ACCESS	EA	1
114	65	XAHZZ	- - -	45152	1838810	..HOUSING, XFER CASE	EA	1
114	66	PAFZZ	9905-01-144-7858	45152	11757FX	..PLATE, ID	EA	1

Current part is item (2) on diagram. Available at www.oshkoshequipment.com

Section II. REPAIR PARTS LIST

(1) ILLUSTRATION		(2)	(3)	(4)	(5)	(6) DESCRIPTION	(7)	(8)
(a) FIG NO.	(b) ITEM NO.	SMR CODE	NATIONAL STOCK NUMBER	CAGE	PART NUMBER	USABLE ON CODE	UM	CITY INC IN UNIT
						GROUP 0801 TRANSFER CASE ASSEMBLY		
114	67	PAFZZ	5315-01-340-1235	45152	1538800	.TACK, METAL	EA	4
114	68	PAOZZ	4730-00-221-2140	96906	MS20913-6S	.PLUG, PIPE	EA	1
114	69	PAFZZ	9905-01-144-7860	45152	60009AX	.PLATE, INSTRUCTION	EA	1
114	70	PAOZZ	4730-01-043-9027	36540	402Y23E	.PLUG, PIPE, MAGNETIC	EA	1
114	71	PAHHH	3040-01-338-4577	45152	1843620U	.REAR SHAFT ASSY	EA	1
114	72	PBHZZ	- - -	45152	1843650	.CONE, BEARING W/CUP	EA	1
114	73	PBHZZ	3040-01-338-7606	45152	1836480	.GEAR, HELICAL	EA	1
114	74	PBHZZ	- - -	45152	38GX254	.BEARING ASSEMBLY	EA	1
114	75	PAHZZ	3120-00-287-6437	96906	MS17795-176	.BEARING, SLEEVE	EA	1
114	76	PAHZZ	3130-01-338-6992	45152	1839010	.HOUSING, BEARING	EA	1
114	77	PAHZZ	3040-01-144-8238	45152	55025BX	.COLLAR, SHAFT	EA	1
114	78	PAHZZ	5305-00-071-2069	80204	B1821BH050C150N	.SCREW, CAP, HEX 1/2-13 X 1 1/2	EA	6
114	79	PAHZZ	5310-00-809-5998	96906	MS27183-18	.WASHER, FLAT 1/2	EA	6
114	80	PFHZZ	5310-01-143-6449	45152	55068BX	.WASHER, FLAT	EA	1
114	81	PFHZZ	5310-01-143-6462	03018	56	.WASHER, SPRING, TNSN	EA	8
114	82	PFHZZ	2520-01-144-8603	45152	55042CX	.FORK, SHIFTER	EA	1
114	83	PFHZZ	5305-00-275-8530	73460	3220	.SETSCREW 7/16-20	EA	1
114	84	MHHZZ	- - -	45152	25806AX9	.WIRE, SAFETY MAKE FROM PART NUMBER MS20995-C41, CAGE 96906, APPROXIMATELY 9 INCHES LONG.	EA	1
114	85	XAHZZ	- - -	45152	1838820	.HOUSING, XFER CASE FRONT	EA	1
114	86	PAHZZ	5305-00-071-2067	80204	B1621BHO50C125N	.SCREW, CAP, HEX 1/2-13 X 1/4	EA	20
114	87	PAHZZ	2520-01-041-3542	45152	31425BX	.RING, PILOT	EA	1
114	88	PFHZZ	3040-01-338-7521	45152	1693480	.SHAFT, SHOULDERED	EA	1
114	89	PAHZZ	5307-01-145-1644	45152	63216AX	.STUD, PLAIN	EA	1
114	90	PBHHH	3040-01-383-5951	45152	2005020U	.SHAFT ASSY, CENTER	EA	1
114	91	PAHZZ	5306-01-234-3782	45152	1413020	.BOLT, SELF-LOCKING 3/8-16 X 1 1/2	EA	2
114	92	PFHZZ	3040-01-204-9801	45152	1432440	.PLATE, RETAINING	EA	1
114	93	PBHZZ	3110-00-227-2340	60038	H414242-H414210	.BEARING ASSEMBLY	EA	2
114	94	PBHZZ	3040-01-338-3766	45152	1832470	.GEAR, SHAFT	EA	1
114	95	PBHZZ	3010-01-345-3016	45152	1882480	.COUPLING, DRIVE	EA	1
114	96	PAHZZ	5305-01-344-6317	49181	80307	.SCREW, CAP, SOCKET HD 3/8-16 X 1 1/4	EA	2
114	97	PBOZZ	4730-00-253-4413	96906	MS39230-3	.ELBOW, PIPE	EA	1

Current part is item (2) on diagram. Available at www.oshkoshequipment.com

Section II. REPAIR PARTS LIST

(1) ILLUSTRATION		(2)	(3)	(4)	(5)	(6)	(7)	(8)
(a) FIG NO.	(b) ITEM NO.	SMR CODE	NATIONAL STOCK NUMBER	CAGE	PART NUMBER	DESCRIPTION USABLE ON CODE	UM	QTY INC IN UNIT
						GROUP 0801 TRANSFER CASE ASSEMBLY		
114	98	PA0ZZ	2520-00-395-7722	00736	MBGFPM	.BREATHER	EA	1
114	99	PAHZZ	5315-01-081-2925	45152	55075AX	.PIN, DOWEL	EA	2
114	100	PFHZZ	5365-01-143-6445	45152	59902AX	.SPACER, SLEEVE	EA	1
114	101	PAHZZ	5306-01-172-1556	45152	335BX2	.BOLT 7/16-20 X 1 1/2	EA	2
114	102	PFHZZ	5365-01-144-7377	45152	59903AX	.SPACER, SLEEVE	EA	1
114	103	PFHZZ	2520-01-144-7307	45152	54209CX	.SHIFTER FORK	EA	1
114	104	PFHZZ	5340-01-145-3255	45152	59899AX	.CONNECTOR, ROD END	EA	1
114	105	PAHZZ	5310-00-834-8734	45152	EE45293	.NUT, HEX, JAM 1/2-20	EA	1
114	106	PFHZZ	5340-01-353-5609	45152	1917240	.PLATE, MOUNTING	EA	1
114	107	PAHZZ	1310-00-834-8734	96906	MS35691-37	.NUT, LOCK 1/2-20	EA	1
114	108	PAHZZ	5330-00-846-8177	10988	A11507	.SEAL, PLAIN ENCASED	EA	1
114	109	PFHZZ	1040-01-345-5693	45152	1723870	.SHAFT, STRAIGHT	EA	1
114	110	PAHZZ	1730-00-221-2136	96906	MS20913-1S	.PLUG, PIPE	EA	1
114	111	PAHZZ	5360-01-086-1419	45152	54396AX	.SPRING, COIL	EA	2
114	112	PFHZZ	1110-00-949-1438	11083	4B9880	.BALL	EA	2